

BS STANDARD DOUBLE DOOR WAFER CHECK VALVE

Type: DH77X Doc No: DS-902-DH77X-01-E-S

1.0 PRODUCT OVERVIEW

The DH77X series butterfly check valve is a one-way check valve. When the medium is flowing forward, the valve flap is opened under the pressure of the fluid; when the medium flows in the opposite direction, the valve flap is closed under the spring force and the reverse fluid pressure. Cut the channel to prevent backflow



Dimensions:

2"(DN50)-16"(DN400)

Design Standard:

JB/T8937

Connection Standard:

BS EN 1092 PN10/16/25, BS 10 TABLE D/E, AS 2129 TABLE E,

Working Pressure:

PN10, PN16, PN25

Application:

Double Door Wafer Check Valve operating temperature range is 0°C-80°C.

Pipe Material:

Ductile iron or carbon steel flanges,
Material: EN-GJS-450-10, BS-1C22

Sign Off:

Owner: _____ Contractor: _____ Engineer: _____
Location: _____ Date: _____ Approved & Date: _____

Standard: EN 1092-1 ,EN 1092-2

Surface Treatment:

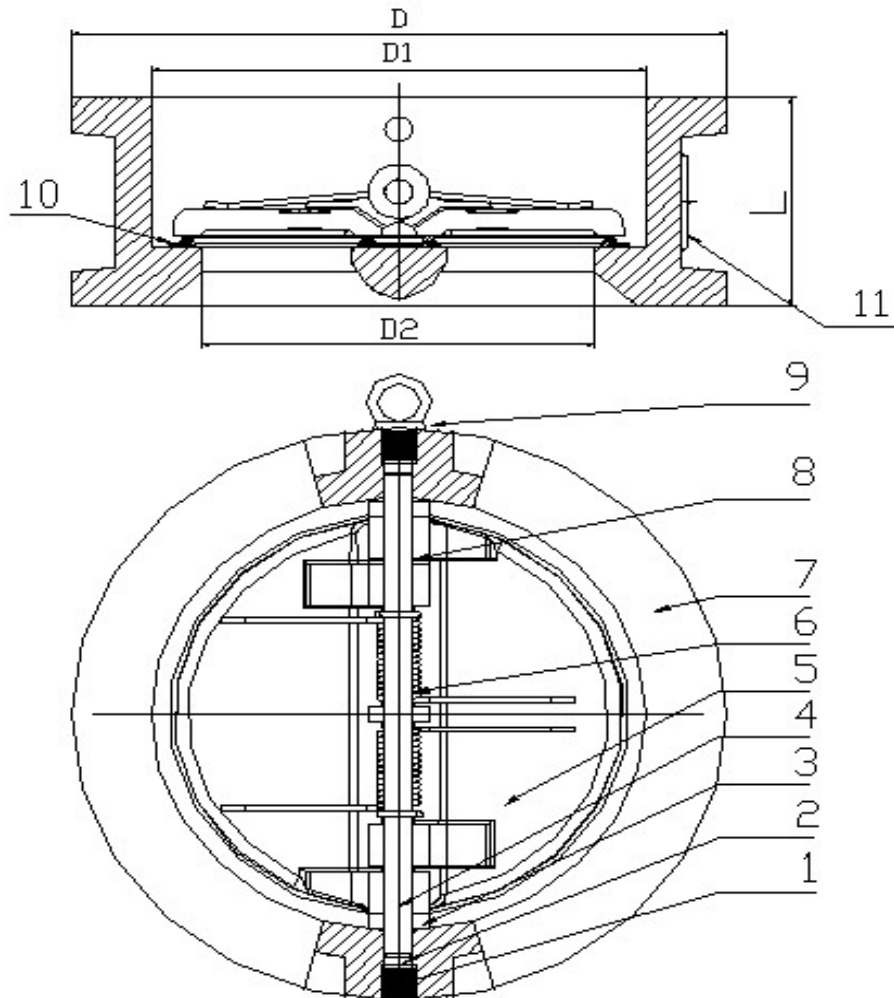
- Epoxy power painting (color numbers as RAL5005, etc)
- Others would be available upon client's detailed request

2.0 APPROVALS



3.0 SPECIFICATIONS

Product Sketch:



Sign Off:

Owner: _____ Contractor: _____ Engineer: _____
 Location: _____ Date: _____ Approved & Date: _____

No.	Part	Material	Optional
1	Screw	Carbon Steel	
2	Shaft Seal	EPDM	
3	Washer	PTFE	
4	Stem	SS420	SS304, SS316, SS416
5	Disc	SS316	SS304, C95400, EN-GJS-450-10
6	Spring	SS304	SS316
7	Valve Body	EN-GJS-450-10	
8	Washer	PTFE	
9	EDH	Carbon Steel	
10	Rubber Seat	EPDM	NBR
11	Name Plate		

4.0 DIMENSIONS AND PERFORMANCE

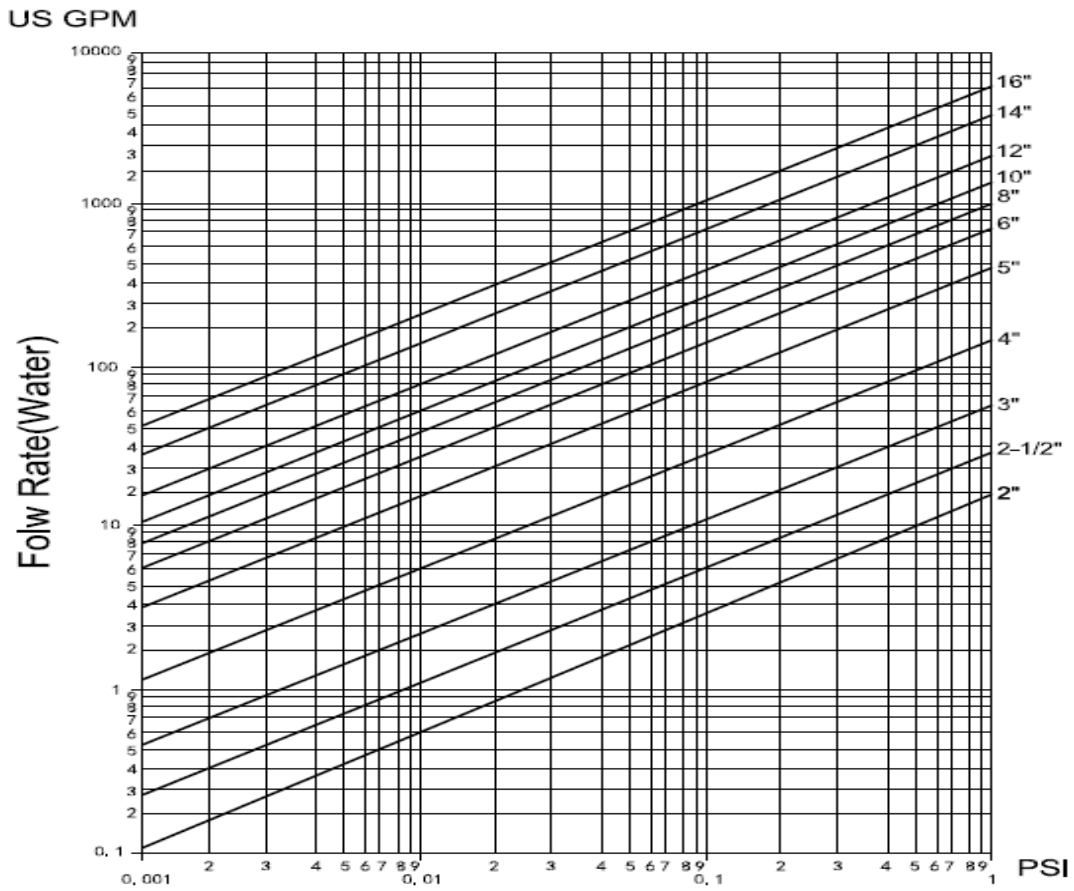
4.1 Dimensions

DN		Dimensions			
inch	MM	L	D	D1	D2
2"	50	54	107	64	46
2 1/2"	65	54	127	78	60
3"	80	57	142	94	70
4"	100	64	162	117	84
5"	125	70	192	145	115
6"	150	76	218	170	134
8"	200	95	273	224	184
10"	250	108	328	265	220
12"	300	143	378	310	260
14"	350	184	438	360	302
16"	400	191	489	410	350

4.2 Flow rates

Sign Off:

Owner: _____ Contractor: _____ Engineer: _____
 Location: _____ Date: _____ Approved & Date: _____



4.3 Strength & Sealing Testing

Seal Test: 1.8MPa.

Shell Test: .2.4MPa.

5.0 REFERENCE MATERIALS

Approved certification for double door wafer check

Sign Off:

Owner: _____ Contractor: _____ Engineer: _____
 Location: _____ Date: _____ Approved & Date: _____